



OLIVE GROVE

OLIVE GROVE

Luxury Residence





OLIVE GROVE

Kalives|Chania  
Crete



20 luxury apartments  
a few steps from the sea





# OLIVE GROVE

---

## CRETE ISLAND

Covering an area of 8,300 square kilometers, Crete offers a rich and diverse tourism experience. With its stunning beaches, ancient cultural traditions, and dramatic landscapes featuring the White Mountains, rolling hills, olive groves, and vineyards, the island promises an unforgettable getaway.

Crete is also renowned for its exceptional Greek cuisine, which is not only delicious but also considered one of the healthiest in the world. Steeped in history dating back to the Minoan civilization, Crete remains a popular destination for those seeking a perfect blend of relaxation, culture, history, and the warm hospitality for which Greece is famous.





# OLIVE GROVE

Kalives, Chania  
Crete







OLIVE GROVE

Building 1





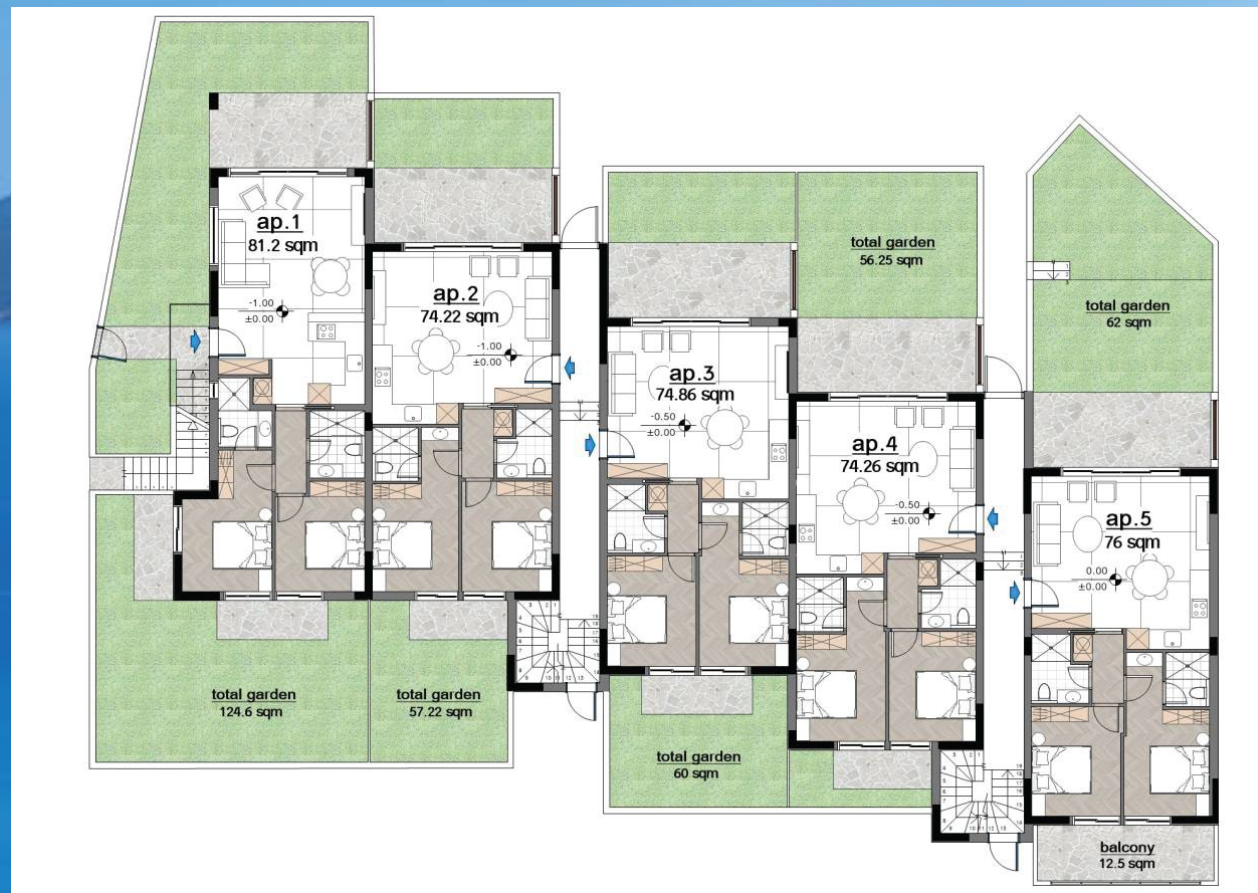


# OLIVE GROVE

## Building 1 ground floor



B1 Ground Floor					
apartment no.	1	2	3	4	5
total covered area	95.6	91.5	93	92	93.1
apartment area	81.8	76.1	77.4	76.6	77.6
covered balconies	13.7	15.5	15.6	15.5	15.5
garden	117.94	39.94	39.85	38.25	44.55
uncovered balconies	9.37	4.24	4.82	4.18	13.99
garden & uncovered balconies	127.31	42.18	44.67	42.43	58.54
parking no.	17	18	19	20	16
storage no.	19	20	21	22	16



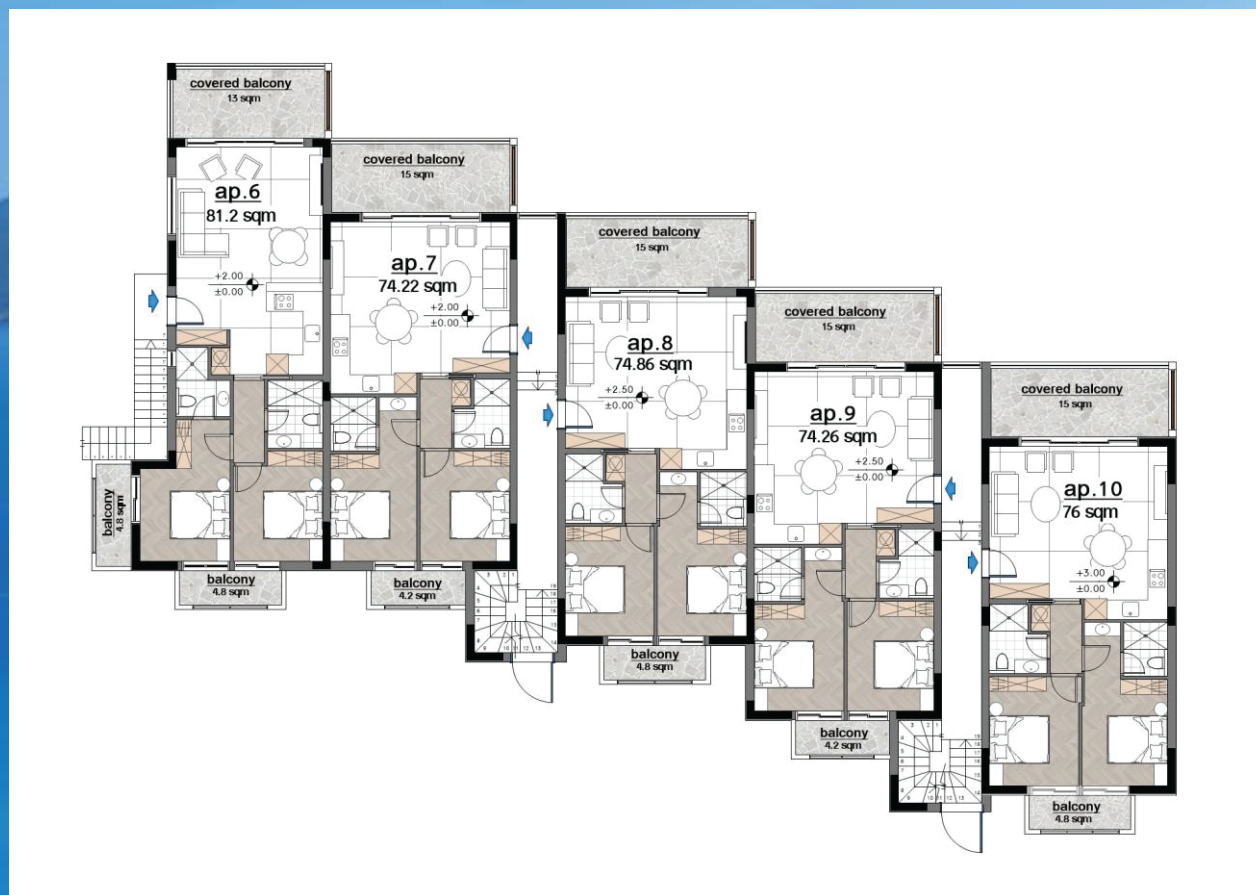


# OLIVE GROVE

## Building 1 first floor



B1 First Floor					
apartment no.	6	7	8	9	10
total covered area	95.6	91.5	93	92	93.1
apartment area	81.8	76.1	77.4	76.6	77.6
covered balconies	13.7	15.5	15.6	15.5	15.5
uncovered balconies	9.6	4.2	4.8	4.2	4.8
parking no.	15	7	8	11	12
storage no.	14	1	2	11	12







OLIVE GROVE

Building 2





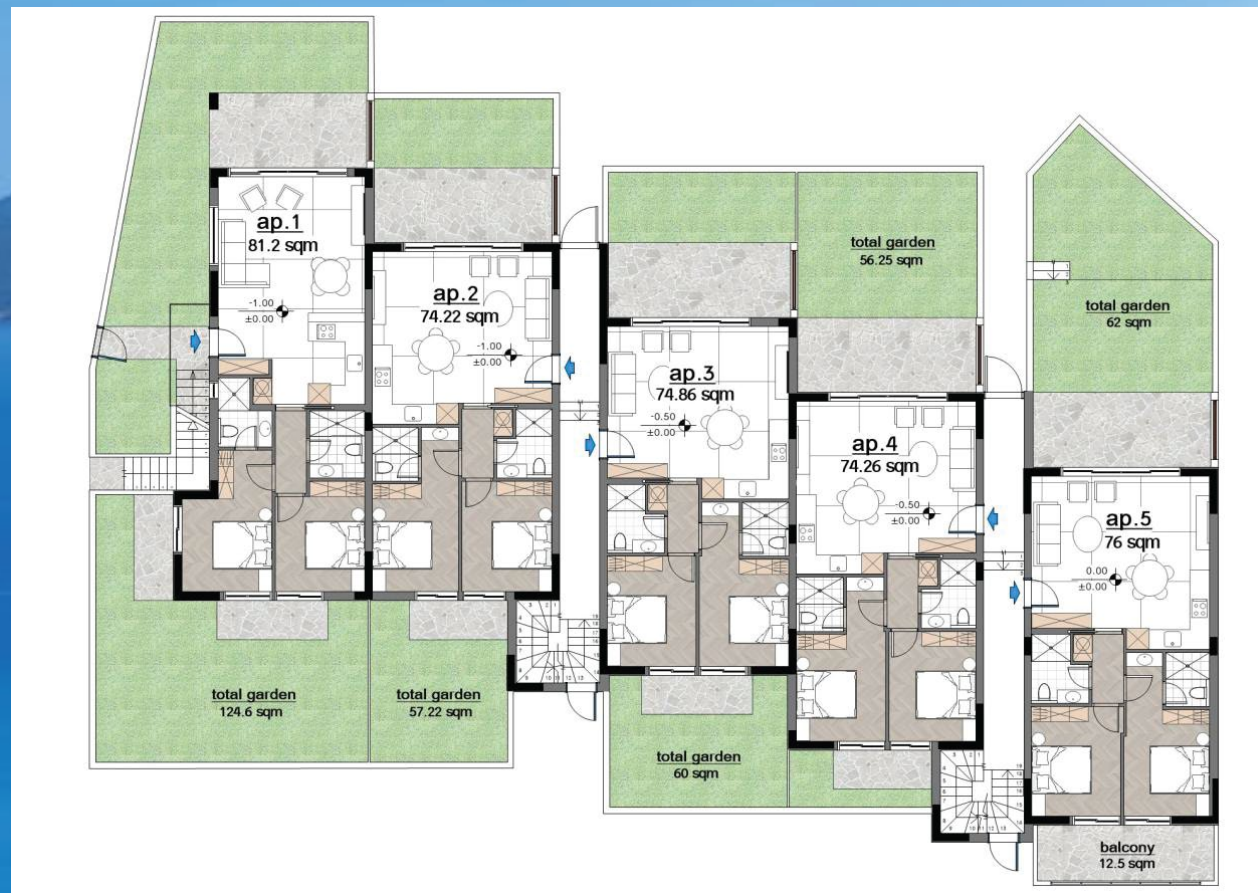


# OLIVE GROVE

## Building 2 ground floor



B2 Ground Floor					
apartment no.	11	12	13	14	15
total covered area	96	91.4	92.5	91.8	93.9
apartment area	83.1	75.9	76.5	76.5	77.6
covered balconies	13	15.5	16	15.2	16.2
garden	80.33	54.41	25.28	27.76	36.54
uncovered balconies	9.27	5.2	5.2	5.2	6.12
garden & uncovered balconies	89.6	59.6	30.48	39.96	42.66
parking no.	1	2	3	4	5
storage no.	3	4	5	6	7





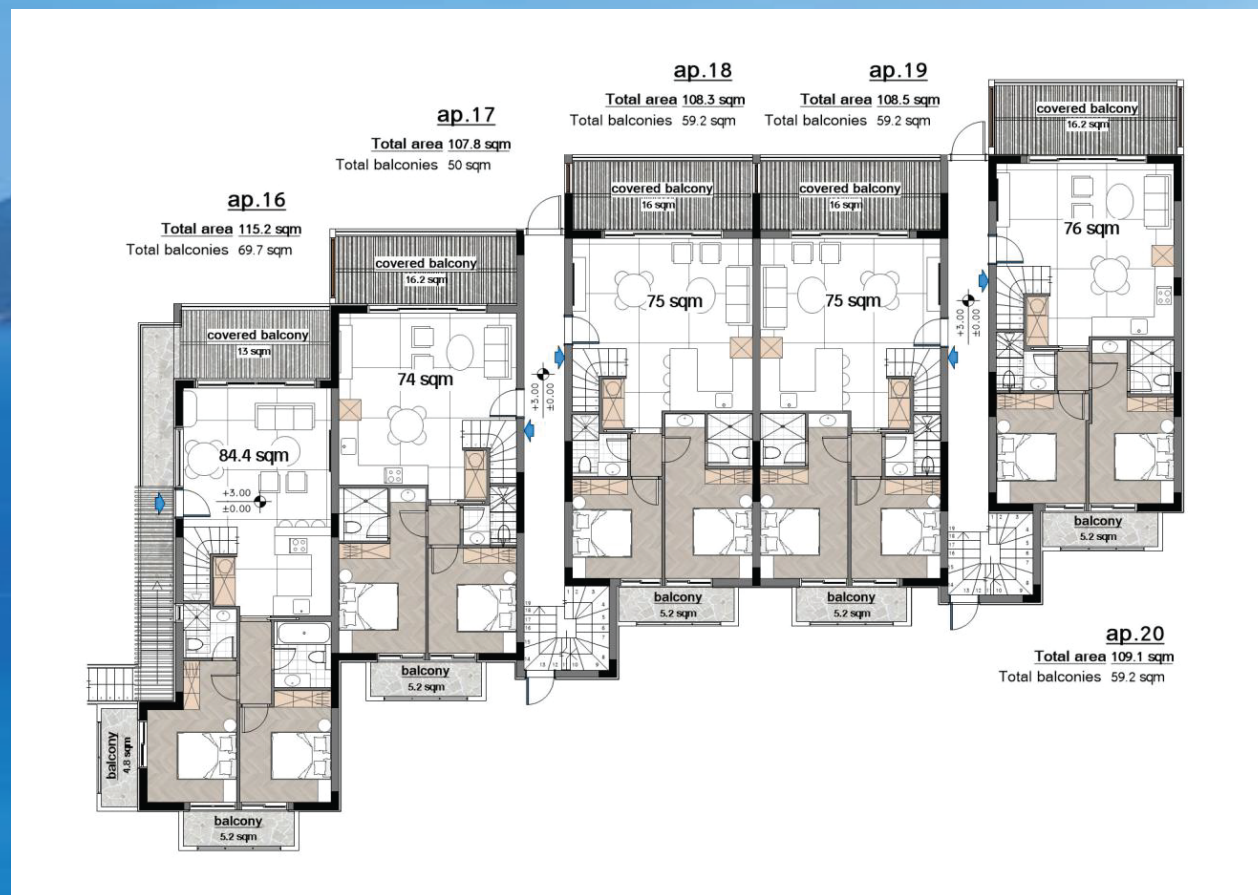


# OLIVE GROVE

## Building 2 first floor



B2 First Floor					
apartment no.	16	17	18	19	20
total covered area	131.2	115.8	114.3	114.3	116.6
total apartment area	118.5	116.9	113.6	113.6	115.3
first floor area	83.1	78.9	76.5	76.5	77.6
covered balconies	18	15.5	16	15.2	16.2
uncovered areas	4.3	5.2	5.2	5.2	5.8
mezzanine	35.4	38	37.1	37.1	37.7
uncovered balconies	48.2	36.8	37.9	37.8	39
total covered balconies	18	15.5	16	15.2	16.2
total uncovered balconies	52.4	42	43.1	43	44.8
parking no.	10	9	13	6	14
storage no.	9	8	13	10	15





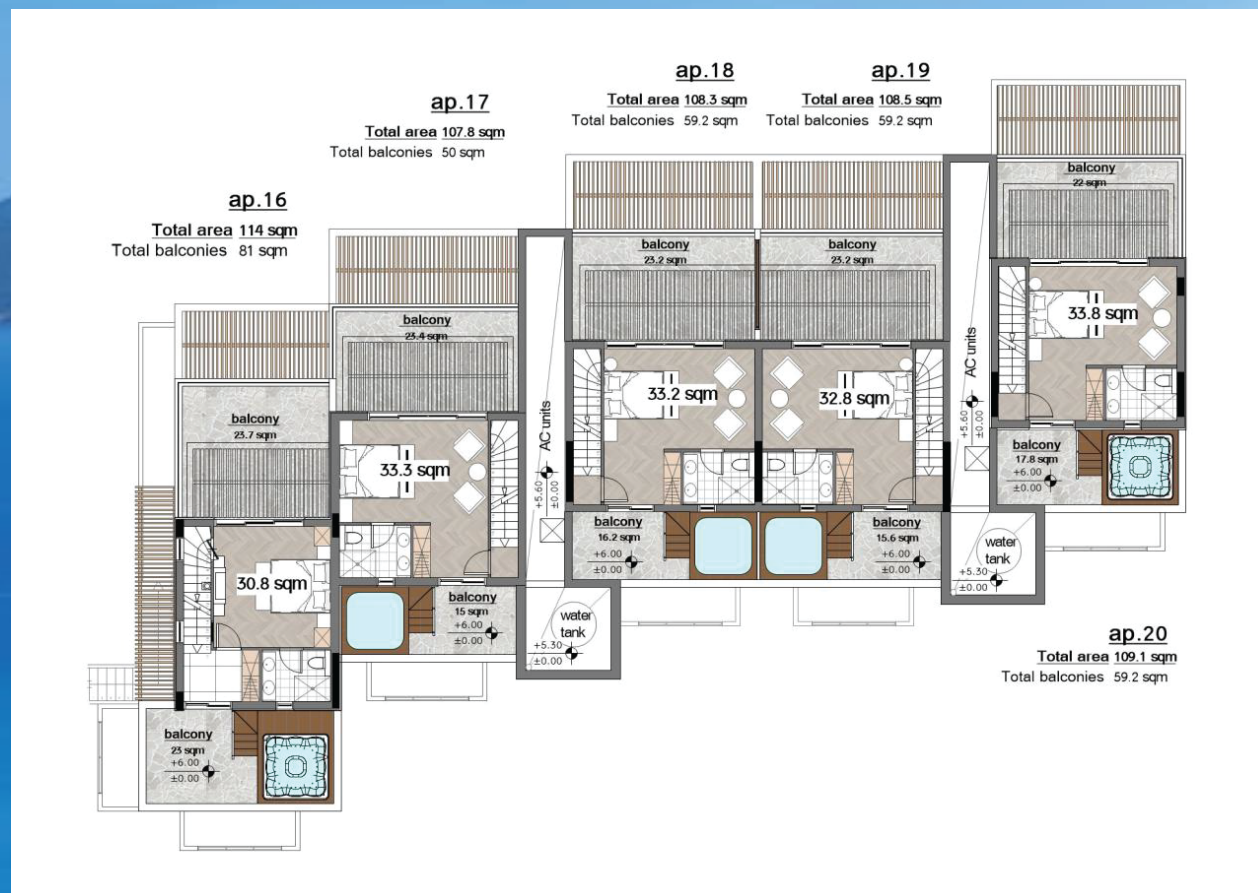


# OLIVE GROVE

## Building 2 loft



B2 Loft					
apartment no.	16	17	18	19	20
loft area	35.4	38	37.1	37.1	37.7
uncovered balconies	48.2	36.8	37.9	37.8	39







# OLIVE GROVE

## The Swimming Pools

Each building has a private swimming pool for the tenants to use.



B2 –infinity pool



B1–with toddler's pool





# OLIVE GROVE

## Apartments Size and Areas

	B1 Ground Floor					B1 First Floor				
apartment no.	1	2	3	4	5	6	7	8	9	10
total covered areas	95.6	91.5	93	92	93.1	95.6	91.5	93	92	93.1
total apartment area										
apartment area	81.8	76.1	77.4	76.6	77.6	81.8	76.1	77.4	76.6	77.6
covered balconies	13.7	15.5	15.6	15.5	15.5	13.7	15.5	15.6	15.5	15.5
garden	117.94	39.94	39.85	38.25	44.55					
uncovered balconies	9.37	4.24	4.82	4.18	13.99	9.6	4.2	4.8	4.2	4.8
garden & uncovered balconies	127.31	42.18	44.67	42.43	58.54					
mezzanine										
uncovered balconies										
total covered balconies										
total uncovered balconies										
parking no.	17	18	19	20	16	15	7	8	11	12
storage no.	19	20	21	22	16	14	1	2	11	12

	B2 Ground Floor					B2 First Floor				
apartment no.	11	12	13	14	15	16	17	18	17	20
total covered areas	96	91.4	92.5	91.8	93.9	131.2	115.8	114.3	114.3	116.6
total apartment area						118.5	116.9	113.6	113.6	115.3
apartment area	83.1	75.9	76.5	76.5	77.6	83.1	78.9	76.5	76.5	77.6
covered balconies	13	15.5	16	15.2	16.2	18	15.5	16	15.2	16.2
garden	80.33	54.41	25.28	27.76	36.54					
uncovered balconies	9.27	5.2	5.2	5.2	6.12	4.3	5.2	5.2	5.2	5.8
garden & uncovered balconies	89.6	59.6	30.48	32.96	42.66					
mezzanine						35.4	38	37.1	37.1	37.7
uncovered balconies						48.2	36.8	37.9	37.8	39
total covered balconies						18	15.5	16	15.2	16.2
total uncovered balconies						52.4	42	43.1	43	44.8
parking no.	1	2	3	4	5	10	9	13	6	14
storage no.	3	4	5	6	7	9	8	13	10	15





# OLIVE GROVE

## Underground Parking Layout

The project includes 20 private parking spaces and 20 storage rooms.  
(Each apartment has a private storage room and parking)

6 Above ground parking spaces at the entrance to the project  
(Suitable for accessibility)

14 parking spaces on the basement floor,  
Each apartment has attached parking.



6 Above ground parking spaces.

<-- The entrance to the basement  
of the underground parking lot  
from the road level





OLIVE GROVE

Front Building

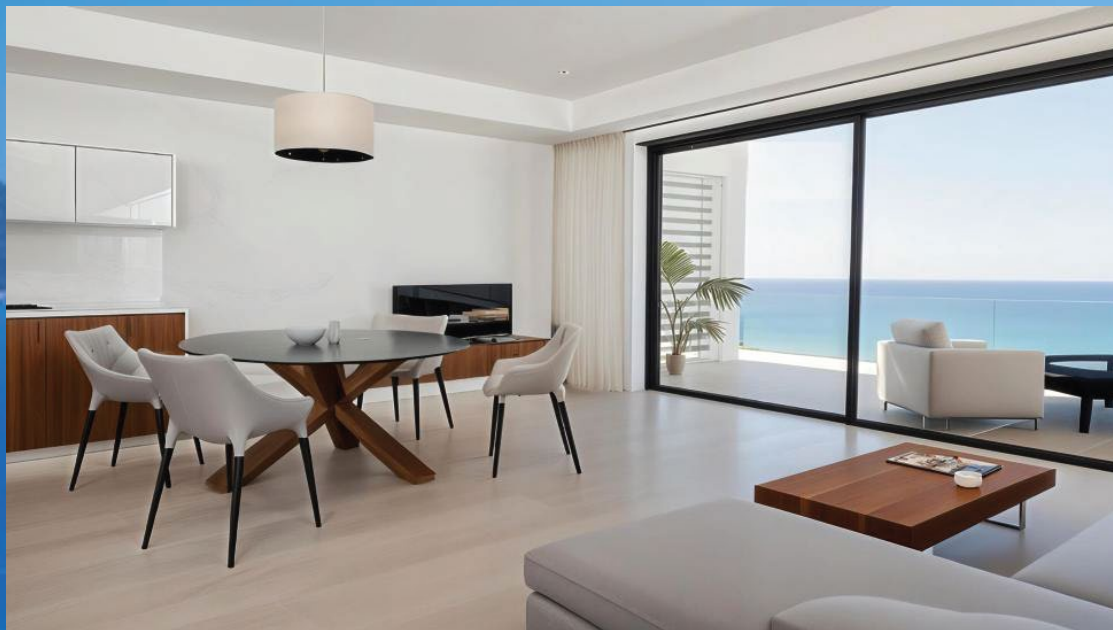






# OLIVE GROVE

## Interior Design



Every detail of "Olive Grove" has been thoughtfully designed to offer the perfect blend of comfort, sophistication, and timeless coastal charm. Constructed using high-end materials and premium finishes, each residence reflects a commitment to superior quality and enduring elegance.

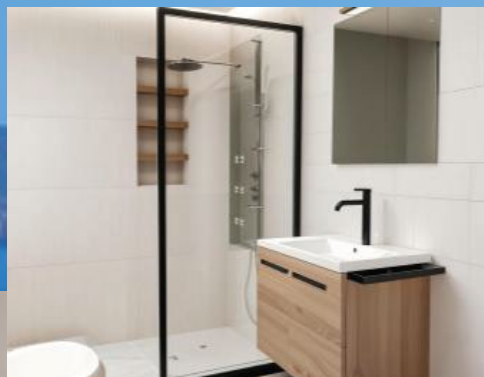






# OLIVE GROVE

## Interior Design



From the foundation to the final touch, every element has been selected with care—from durable, energy-efficient structures to state-of-the-art insulation, that ensures comfort throughout the seasons. Interiors feature meticulously chosen flooring, bespoke joinery, and designer fixtures that combine aesthetic appeal with lasting function.





OLIVE GROVE

Interior Design



The overall design prioritizes natural light, clean lines, and seamless indoor-outdoor living, echoing the serene beauty of the Cretan coast.





# OLIVE GROVE

## Technical Specifications and Special Accessories

### Key Features & Finishing Highlights

- High-end materials chosen for durability, efficiency, and timeless elegance
- Energy-efficient building design with advanced insulation for year-round comfort
- Premium flooring throughout –stylish, durable, and easy to maintain
- Custom-designed kitchens with high-quality cabinetry and stone countertops
- Modern, built-in appliances offering both convenience and sleek design
- Elegant bathrooms featuring designer ceramic tiles, custom vanities, and premium fixtures
- Tailored joinery and interior finishes that reflect thoughtful, cohesive design
- Abundant natural light through large windows and open-plan layouts
- Seamless indoor-outdoor flow to spacious terraces and sea-view balconies
- Refined architectural design blending contemporary aesthetics with Mediterranean charm







# OLIVE GROVE

## Project Characteristics

### BREATHTAKING VIEW

Each apartment offers a spectacular panoramic view, of the Mediterranean Sea

### FUNCTIONAL LUXURY

Each apartment features a spacious living room, a kitchen facing the sea, and two suites with attached bathrooms. Five apartments stand out as exclusive penthouses, each providing access to the roof where a luxurious suite awaits, complemented by breathtaking panoramic sea views.

### PRIME LOCATION

Just a quick 15-minute drive will take you to the vibrant city of Chania, the international airport is only 20 minutes away, making travel and exploration a breeze!

### ENCHANTING DESIGN

Immerse yourself in the captivating world of modern Greek design, where contemporary aesthetics harmoniously blend with the enchanting spirit of the Mediterranean.

### PUBLIC SPACE

A unique space is developed featuring gardening and two large pools accessible to all residents. A spacious underground parking lot with private storage units, are also available.

### INCOME POTENTIAL

Ideal to rent throughout most of the year, either long term or short term.